

SCC Explorer (Explorer)

Easy access to your storage management data

Manage your z/OS DASD Storage using a Graphical User Interface. Drill down from Sysplex to Volume Pools to Volumes and actual Datasets in the Browse Function. Use the Query and Report functions to make requests for real-time and historical information.

The **SCC Explorer** GUI provides easy access to the storage management data contained in the SCC Explorer database, and a direct connection to the z/OS host to execute storage management related commands.

Manage z/OS DASD from a GUI !

Browse / Drill down interface:

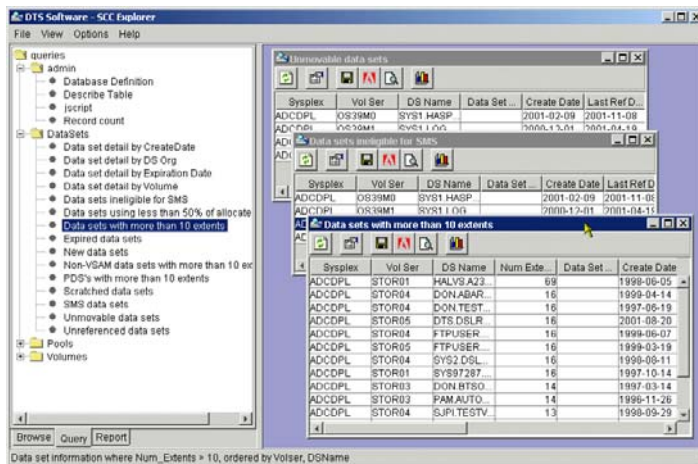
- Sysplex > Pools > Volumes
- ISPF type Search
- Active & deleted datasets
- Real time, NOT a snapshot

Query Function:

- Over 20 Pre-defined Queries
- Output to Screen, Printer, PDF, ASCII file
- Graph/chart generation
- SQL format queries

Command Interface:

- Operate on a single dataset / volume, or a range of datasets / volumes
- Scratch, Recatalog, Release Space
- MIGRATE, RECALL Datasets
- DEFrag a volume or a pool
- User defined commands



The Query and Report functions can be used to make requests for real-time and historical information.

Example simple request:

“Show all datasets that start with DB2”

Example complex request:

“Show all non-VSAM datasets over 10 extents, residing on a Volume starting with PROD”

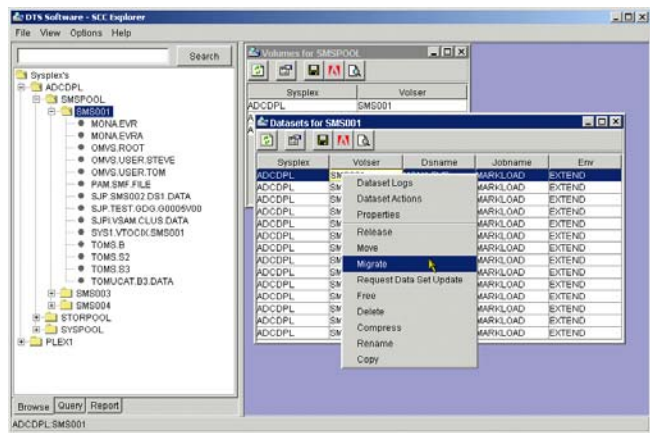
Results can be sent to a window, printer, or saved as PDF or ASCII file.

DASD Management made simple...

SCC Explorer makes it simple to issue z/OS commands based on Browse / Query results.

For example:

1. Request datasets residing on volumes starting with TEST that have not been referenced in the last 30 days
2. Highlight the dataset(s) of interest and MIGRATE or DELETE them in a click of the mouse!

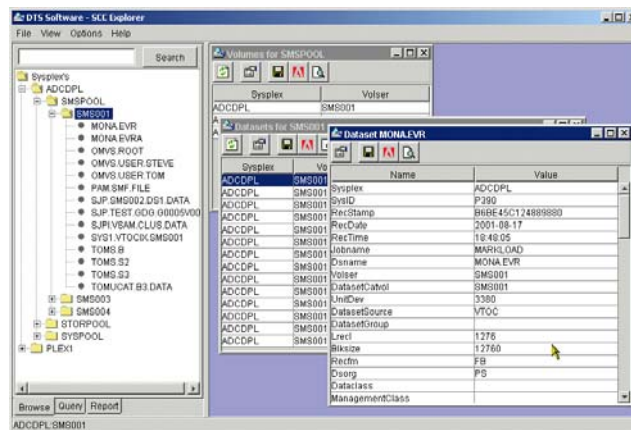


SCC Monitor/Real-time

SCC Explorer is a multi-tier system and consists of three components: SCC Monitor, SCC Explorer/RT, and SCC Explorer GUI. The SCC Monitor/Real-time captures DASD activity in real-time and sends the information to the SCC Explorer/RT. The activity records reflect dataset creation, extension and deletion, and volume status, and are used to show not only the existing dataset and volume status but history information as well. SCC Monitor runs under the DIF address space (shared by all SCC components).

SCC Explorer/RT

The SCC Explorer/RT receives storage management data from SCC Monitor/Real-time, and stores the information in a relational database. This database contains information on individual datasets, volumes and volume pools. SCC Explorer comes complete with MySQL, a robust and powerful open source relational database system, but it has been designed to work with a variety of other relational database management systems including MS SQL Server, DB2, Oracle and Sybase. SCC Explorer/RT is written in Java and runs on most platforms that support the current Java Runtime Environment (JRE), including MS Windows, Linux and various Unix versions.



Example screenshots highlight how the information is displayed within the SCC Explorer/GUI. Query results can be viewed in the GUI window, sent to the printer, saved to file or charted in 2D or 3D. Context sensitive menus are available to facilitate selection from a group of standard or user-defined actions.